

भारत सरकार  
भारत मौसम विज्ञान विभाग  
(पृथ्वी विज्ञान मंत्रालय)  
मौसम केन्द्र  
विकास भवन पी ओ  
तिरुवनंतपुरम - 695 033



GOVERNMENT OF INDIA  
INDIA METEOROLOGICAL DEPARTMENT  
(Ministry of Earth Sciences)  
METEOROLOGICAL CENTRE  
Vikas Bhavan P.O,  
Thiruvananthapuram-695 033

TIME OF ISSUE: 1500 HOURS IST

DATED: 08.10.2018

BULLETIN NO. : 12 (ARB 04/2018)

To

The Chief Secretary, Govt. of Kerala  
The Chief Administrator, Lakshadweep Islands  
The Addnl. Chief Secretary (Revenue & Disaster Management)  
The Secretary, Dept. of Fisheries, Govt. of Kerala  
The State Emergency Operation Centre  
The Director General of Police  
The Director of Fisheries  
The District Collectors

**Sub: Cyclonic Storm, 'LUBAN' over westcentral & adjoining southwest Arabian Sea**

The Cyclonic Storm over westcentral & adjoining southwest Arabian Sea moved west-northwestwards with a speed of about 11 kmph in last 06 hours and lay centered at 1130 hrs IST of today, the 08<sup>th</sup> October 2018 over westcentral & adjoining southwest Arabian Sea, near latitude 12.4°N and longitude 61.8°E, about 970 km east-southeast of Salalah (Oman), 860 km east of Socotra Islands (Yemen) and 1320 km west-northwest of Minicoy. It is very likely to intensify into a Severe Cyclonic Storm during next 24 hours. It is very likely to move west-northwestwards towards South Oman & Yemen Coasts during next 5 days. Forecast track & intensity are given in the following table:

| Date/Time(IST) | Position<br>(Lat. °N/ long. °E) | Maximum sustained surface<br>wind speed (Kmph) | Category of cyclonic<br>disturbance |
|----------------|---------------------------------|--|-------------------------------------|
| 08.10.18/1130  | 12.4/61.8                       | 75-85 gusting to 95                            | Cyclonic Storm                      |
| 08.10.18/1730  | 12.7/61.2                       | 80-90 gusting to 100                           | Cyclonic Storm                      |
| 08.10.18/2330  | 12.9/60.6                       | 80-90 gusting to 100                           | Cyclonic Storm                      |
| 09.10.18/0530  | 13.2/60.0                       | 90-100 gusting to 115                          | Severe Cyclonic Storm               |
| 09.10.18/1130  | 13.3/59.6                       | 95-105 gusting to 120                          | Severe Cyclonic Storm               |
| 09.10.18/2330  | 13.7/59.1                       | 100-110 gusting to 125                         | Severe Cyclonic Storm               |
| 10.10.18/1130  | 14.1/58.5                       | 100-110 gusting to 125                         | Severe Cyclonic Storm               |
| 10.10.18/2330  | 14.5/57.8                       | 100-110 gusting to 125                         | Severe Cyclonic Storm               |
| 11.10.18/1130  | 14.8/57.0                       | 100-110 gusting to 125                         | Severe Cyclonic Storm               |
| 11.10.18/2330  | 15.0/56.3                       | 100-110 gusting to 125                         | Severe Cyclonic Storm               |
| 12.10.18/1130  | 15.2/55.2                       | 100-110 gusting to 125                         | Severe Cyclonic Storm               |
| 12.10.18/2330  | 15.4/54.2                       | 90-100 gusting to 115                          | Severe Cyclonic Storm               |
| 13.10.18/1130  | 15.5/53.2                       | 80-90 gusting to 100                           | Cyclonic Storm                      |

**Warnings:**

**(i) Wind warning**

- Gale wind speed reaching 70-80 kmph gusting to 90 kmph is very likely over westcentral & adjoining southwest Arabian Sea. It is very likely to increase gradually becoming 100-110 kmph gusting to 125 kmph during 9<sup>th</sup> October 2018 evening to 11<sup>th</sup> October evening over westcentral Arabian Sea around the system centre. The wind

speed is very likely to decrease gradually over southwest Arabian Sea from 9<sup>th</sup> morning

- Squally wind speed reaching 40-50 kmph gusting to 60 kmph is very likely over adjoining areas of southeast and east central Arabian Sea during next 24 hrs.

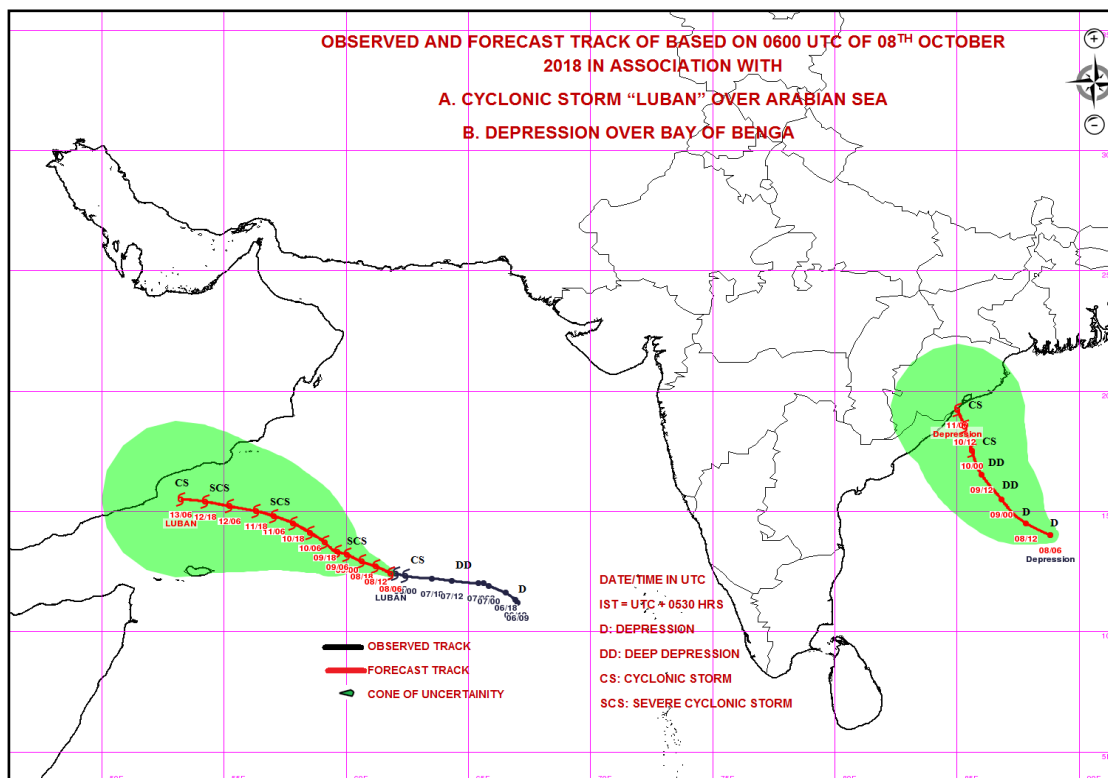
**(ii) Sea condition**

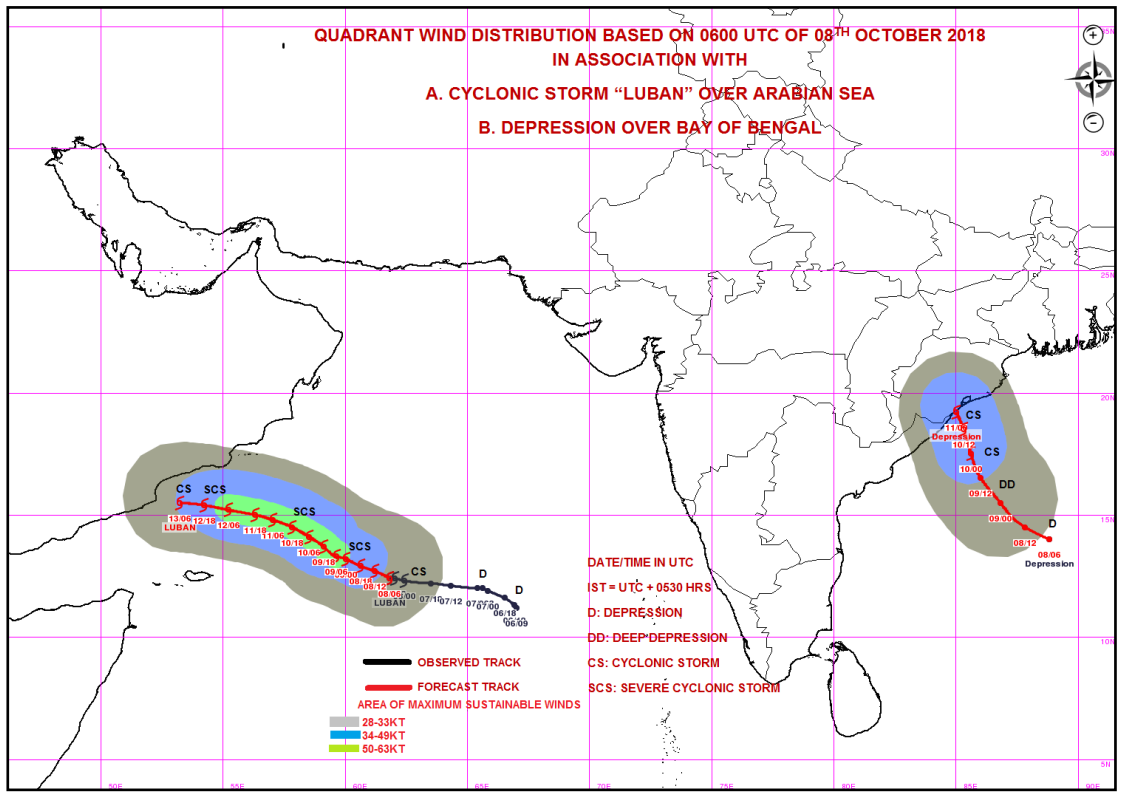
- The sea condition is high around the system centre. It is very likely to become gradually very high over westcentral Arabian Sea from 8<sup>th</sup> October 2018 evening onwards. .

**(iii) Fishermen Warning**

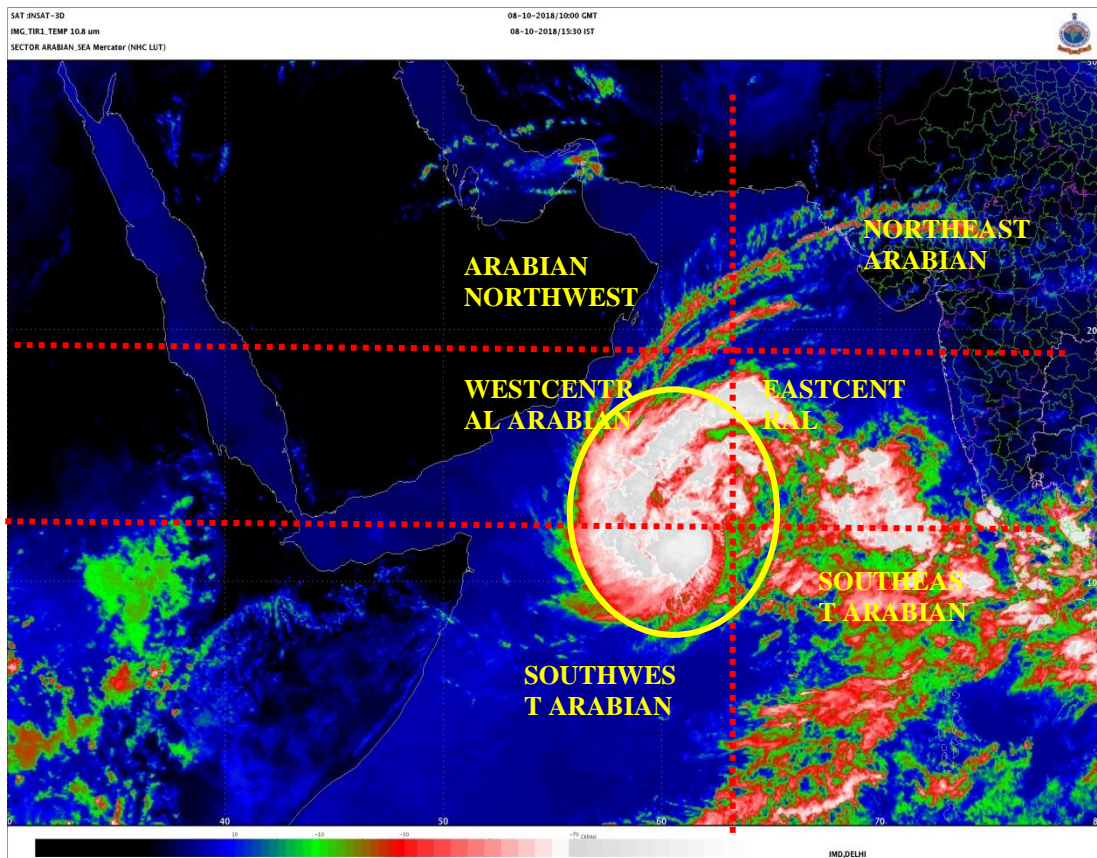
- The fishermen are advised not to venture into deep sea areas of westcentral Arabian Sea from 8<sup>th</sup> to 12<sup>th</sup> October, adjoining southwest Arabian sea during next 48 hrs and adjoining areas of southeast and east central Arabian Sea during next 24 hours.

The next bulletin will be issued at 1730 hrs IST of today, the 08<sup>th</sup> October, 2018.





## ‘LUBAN’



**Duty Officer  
Cyclone Warning Centre  
Meteorological Centre, Thiruvananthapuram**

---

वेब: [www.imdtvm.gov.in](http://www.imdtvm.gov.in) इमेल: cwc.trv@gmail.com फोन: 2322894 / 2322330 / 2330025/2322471 , फैक्स: 2322894